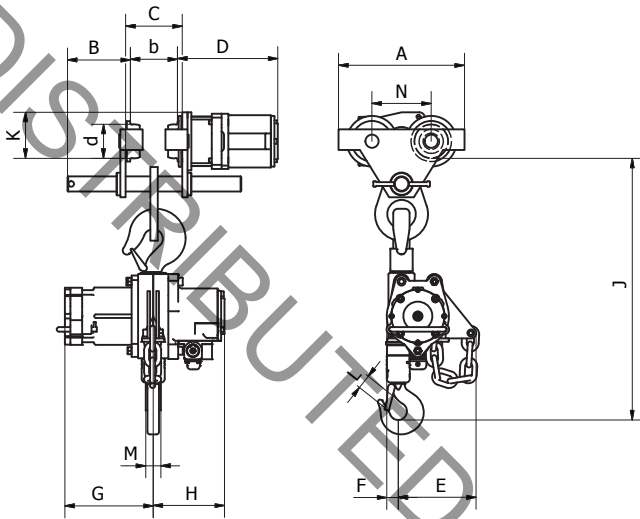




AIR CHAIN HOIST WITH MOTORIZED TROLLEY

SPECIFICATIONS - ATS MOTORIZED TROLLEYS - 0.25ton - 3ton						
		ATSI-025	ATSI-050	ATSI-1	ATSI-2	ATSI-3
		TM2t				TM3t
Trolley Carrying Capacity	mt	2				3
	T	2.2				3.3
Carrying Capacity of hoist with trolley	mt	0.25	0.5	1	2	3
	T	0.27	0.55	1	2.2	3.3
Trolley Weight	lbs.	75				82
Hoist Weight with 10 ft. lift	lbs.	57	57	70	78	130
Total weight with 10 ft. lift and trolley	lbs.	132	132	145	153	212
Weight of Chain per ft. lift	lbs. / ft.	0.7			1.2	1.8
Chain Size		7 x 21		9 x 27	11.2 x 34	
Number of chain strands		1				
Air Pressure Trolley Motor	bar	4-6				
Trolley motor air consumption (full load)	cfm	50				
Hoist motor air consumption (full load)	cfm	60-75		95	110	
Motor Power Output Trolley	kW	0.3				
	HP	0.4				
Motor Power Output Hoist	kW	1.4		1.8		
	HP	1.9		2.4		
Traveling Speed (6 Bar)	m/min	12				
	ft. / min	39				
Hose Connection Motorized Trolley	mm	13			19	
	inch	0.5			0.75	
Minimum Beam Radius	m	1.5				1.5
	ft.	4.92				4.92
Maximum Bottom Flange width	mm	280				300
	inch	11				11.8
Minimum bottom Flange width	mm	65				70
	inch	2.5				2.75
Noise Level at Motorized Trolley	dBA	84				

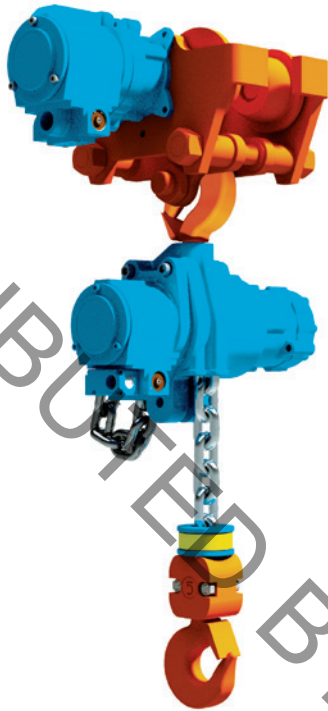




- Motorized trolleys available for the ATSI & Rigger Series
- For hoist capacities greater than 20 ton, see the Monorail Style Units
- Air motor has a polished stainless steel cylinder
- Anti-tip and anti-drop devices
- Manufactured with high quality steel components, allowing for a compact design
- Available with spark resistant features
- Available with marine paint finish

DIMENSIONS - ATS MOTORIZED TROLLEYS - 0.25ton - 3ton

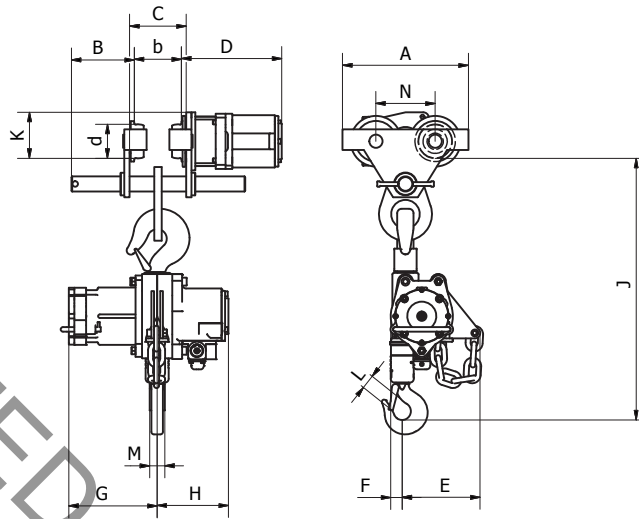
		ATSI-025	ATSI-050	ATSI-1	ATSI-2	ATSI-3
		TM2t				TM3t
A	mm	330				330
	inch	13				13
B	mm	59				59
	inch	2.3				2.3
C	mm	b + 24				b + 25
	inch	b + 0.95				b + .98
d	mm	90				90
	inch	3.5				3.5
D	mm	263				266
	inch	10.4				10.5
E	mm	106		104		206
	inch	4.2		4		8.1
F	mm	39		42		30
	inch	1.5		1.7		1.2
G	mm	139		193	193	234
	inch	5.5		7.6	7.6	9.2
H	mm	179		182		189
	inch	7		7		7.4
J* (Lug Mount)	mm	398		395		490
	inch	15.6		15.5		19.2
J* (Hook Mount)	mm	496		505		692
	inch	19.5		19.8		27.2
K	mm	122				122
	inch	4.8				4.8
L	mm	23				30
	inch	0.9				1.1
M	mm	23				40
	inch	0.9				1.6
N	mm	157				157
	inch	6.2				6.2



AIR CHAIN HOIST WITH MOTORIZED TROLLEY

SPECIFICATIONS - ATS MOTORIZED TROLLEYS - 4.2ton - 20ton							
		ATSI-4.2	ATSI-5	ATSI-6	ATSI-10	ATSI-15	ATSI-20
		TM6t			TM10t	TM20t	
Trolley Carrying Capacity	mt	6			10	20	
	T	6.6			11	22	
Carrying Capacity of hoist with trolley	mt	4.2	5	6	10	15	20
	T	4.6	5.5	6.6	11	16.5	22
Trolley Weight	lbs.	119			231	463	
Hoist Weight with 10 ft. lift	lbs.	160	162	171	267	518	683
Total weight with 10 ft. lift and trolley	lbs.	279	281	290	498	981	1146
Weight of Chain per ft. lift	lbs. / ft.	2.5	3.8	3.6	7.6	11.4	15.2
Chain Size		13 x 36	16 x 45	11.2 x 34	16 x 45		
Number of chain strands		1		2	3		4
Air Pressure Trolley Motor	bar				4-6		
Trolley motor air consumption (full load)	cfm				50		
Hoist motor air consumption (full load)	cfm				110		
Motor Power Output Trolley	kW	0.3			0.9		
	HP	0.4			1.2		
Motor Power Output Hoist	kW	2.5	1.8		2.5		
	HP	3.4	2.4		3.4		
Traveling Speed (6 Bar)	m/min				12		
	ft. / min				39		
Hose Connection Motorized Trolley	mm				19		
	inch				0.75		
Minimum Beam Radius	m	1.8			3	on request	
	ft	5.9			9.8		
Maximum Bottom Flange width	mm	305			305		
	inch	12			12		
Minimum bottom Flange width	mm	126			154		
	inch	4.9			6		
Noise Level at Motorized Trolley	dBA				84		





DIMENSIONS - ATS MOTORIZED TROLLEYS - 4.2ton - 20ton

		ATSI-4.2	ATSI-5	ATSI-6	ATSI-10	ATSI-15	ATSI-20
		TM6t			TM10t	TM20t	
A	mm	400			500	1020	
	inch	15.75	15.75	15.75	19.6	40.2	40.2
B	mm	71			83	83	
	inch	2.8	2.8	2.8	3.3	3.3	3.3
C	mm	b + 27			b + 25	b + 25	
	inch	b + 1	b + 1	b + 1	b + .98	b + .98	b + .98
d	mm	109			145	145	
	inch	4.3	4.3	4.3	5.7	5.7	5.7
D	mm	277			277	277	
	inch	10.9	10.9	10.9	10.9	10.9	10.9
E	mm	201	243	182	195	351	228
	inch	7.9	9.6	7.2	7.7	13.8	9
F	mm	41	39	54	87	176	115
	inch	1.6	1.5	2.1	3.4	6.9	4.5
G	mm	234	271	234	271	271	321
	inch	9.2	10.6	9.2	10.6	10.6	12.6
H	mm	189	194	189	194	204	259
	inch	7.4	7.6	7.4	7.6	8	10.1
J* (Lug Mount)	mm	578	645	735	816	950	995
	inch	22.7	25.3	28.9	32.1	37.4	39.1
J* (Hook Mount)	mm	637	719	675	1000	1138	1280
	inch	25	28.3	26.5	39.3	44.8	50.3
K	mm	154			131	131	
	inch	6	6	6	5.2	5.2	5.2
L	mm	40			53	58	78
	inch	1.6	1.6	1.6	2	2.3	3
M	mm	51			46	52	65
	inch	2	2	2	1.8	2.1	2.6
N	mm	185			236	236	
	inch	7.3	7.3	7.3	9.3	9.3	9.3